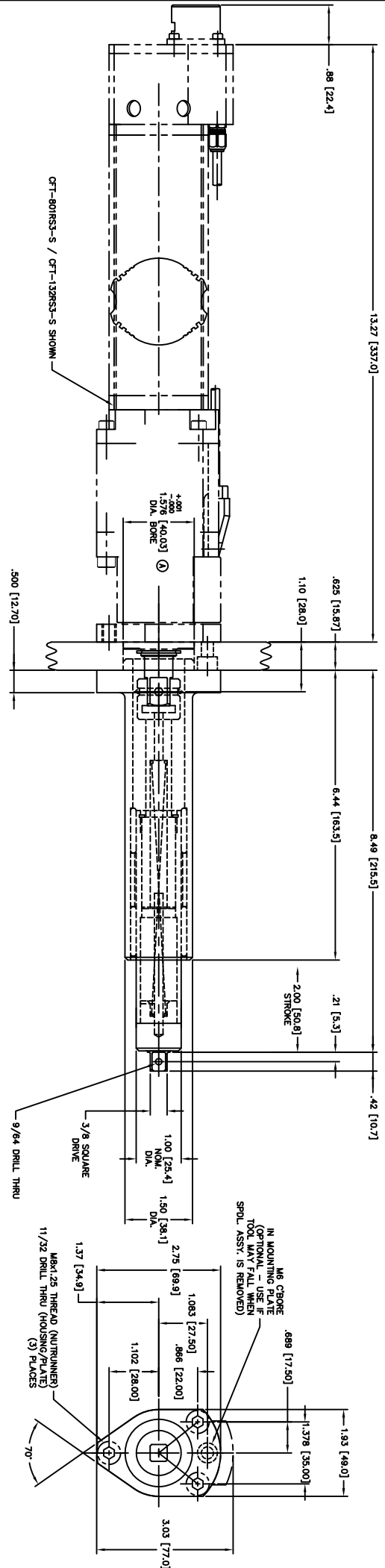


CHANGES		DATE
SYL	BY	REVISION



SPINDLE ASSEMBLY WEIGHT (SPUL ASSY ONLY): 3.5LB

TOLERANCE UNLESS OTHERWISE SPECIFIED  
 INCH METRIC  
 .XX ±.01 .XX ±.25  
 .XXX ±.005 .XXX ±.127  
 .XXXX ±.0005 .XXXX ±.0127  
 ANGLE ±.5° ANGLE ±.5°  
 BREAK ALL SHARP CORNERS &  
 EDGES EXCEPT AS NOTED  
 DO NOT SCALE DRAWING

NOTICE OF PROPRIETARY RIGHTS  
 This drawing is the property of MCG Machinery Systems, Inc. and use is to be restricted to each customer. No element of this drawing is to be reproduced, stored in a retrieval system, or transmitted in any form or by any means, electronic, mechanical, photocopying, recording, or by any information storage and retrieval system without the express written permission of MCG Machinery Systems, Inc.

SPINDLE HAS 1/2" SQ. DRIVE SHAFT (FOR TOOL)  
 CONVERTED DOWN TO 3/8" SQ. DRIVE ROTOR

**MCG MACHINERY SYSTEMS, INC.**  
 a subsidiary of Mitsubishi Corporation  
 1400 W. 12th Street, Suite 100, Fargo, ND 58103  
 Phone: (701) 785-4210 Fax: (701) 785-1872  
 Website: www.mcg-machinery.com

DESIGN: INDIAN TRAIL STRAIGHT SPINDLE ADAPTOR  
 PART: M88  
 CHECKED: M88  
 DATE: 11/27/03  
 SCALE: 1:1  
 SHEET: 1  
 DRAWING NO. SA-3S3-2-50-38